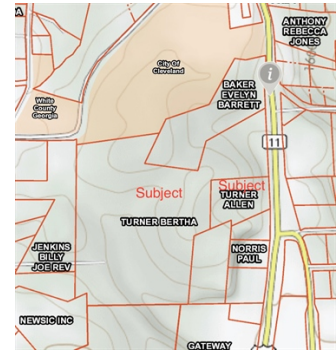


# Prime Commercial Acreage on South Main Street



**\$ 975,000**



**590 South Main Street, Cleveland, GA 30528**

**WEB: [ClevelandCommercialParcel.com](http://ClevelandCommercialParcel.com)**

- » **MLS #:** GaMLS 8467582; Land.com: 6168042
- » Land
- » Commercial Parcel of 20.99 acres, per survey
- » Additional two acre road frontage parcel is available
- » Prime Commercial Location just south of town in Central Business District
- » GaDOT Average Daily Traffic Count of over 22,000 vehicles.
- » Great visibility in both directions from parcel

QR Code



**David Stovall**  
**Senior VP & Partner**  
**(770) 595-0702 (Cell)**  
**(770) 718-5111 (Office)**  
David@DavidStovall.net  
<http://www.DavidStovall.net>



**The Norton Agency**  
434 Green Street  
Gainesville, GA 30501  
(770) 534-5248

Primary parcel shows 20.99 acres per survey. Frontage on South Main Street. Additional parcel of 2.0 acres, per survey, is available. Additional 2.0 acres also fronts to South Main Street.

Premium location in the Central Business District, and one of only a few remaining undeveloped sites between the Appalachian Parkway and the Cleveland Town Square.

All utilities on site and ready for development. Parcel is currently zoned for 'Highway Business'.

